

1. COMMENTS:

- SUBMIT SIGN MANUFACTURERS SIGN SHOPSDRAWINGS FOR APPROVAL. SIGN MUST BE IN COMPLIANCE WITH LEASE EXHIBIT.
- SUBMIT EXAMPLES OF STOREFRONT DISPLAY WINDOW GRAPHICS FOR LANDLORD REVIEW.
- SUBMIT MATERIALS SAMPLES AND COLOR BOARD FOR APPROVAL.
- VERIFY THAT BASE FINISH IS DURABLE AND WILL WITHSTAND CONTACT WITH CLEANING SOLUTIONS AND EQUIPMENT.

GENERAL

- LEASE LINE
- (E) MALL NEUTRAL PIER TO REMAIN, G.C. TO PATCH AND REPAIR AS REGD
- (E) MALL BULKHEAD TO REMAIN, G.C. TO PATCH AND REPAIR AS REGD
- 3/4" X 3/4" WHITE METAL REVEAL, FASTENERS SHALL MATCH REVEAL COLOR.
- 3/4" X 3/4" BLACK METAL REVEAL, FASTENERS SHALL MATCH REVEAL COLOR.
- 1/2" THICK CLEAR TEMPERED GLAZING
- 5/8" THICK CLEAR TEMPERED GLAZING
- 3/4" THICK CLEAR TEMPERED GLAZING
- 1/4" THICK CLEAR TEMPERED INSULATED GLAZING
- UV FILM - REFER TO SPECIFICATIONS SECTION 060600
- OPENING OF ROLLING GRILLE, SEE SCHEDULE A/A00.02
- LOCATION OF ROLLING GRILLE KEY SWITCH. REFER TO ELEVATIONS / SECTIONS FOR MOUNTING HEIGHT
- 1/8" GAULK JOINT. REFER TO FINISH SCHEDULE FOR COLOR AND SPEC.
- FRONT ACCESS DISPLAY WINDOW. SEE SCHEDULE A/A00.02

- (N) MALL BULKHEAD PER MALL SPECIFICATION (TO MATCH EXISTING) BY G.C.
- (E) MALL LINEAR SLOT DIFFUSER TO REMIAN (TYP.)
- (E) MALL TRACK LIGHT TO REMAIN
- (E) FIRE STROBE ANNUNCIATOR TO BE RELOCATED (VERIFY)

PINK

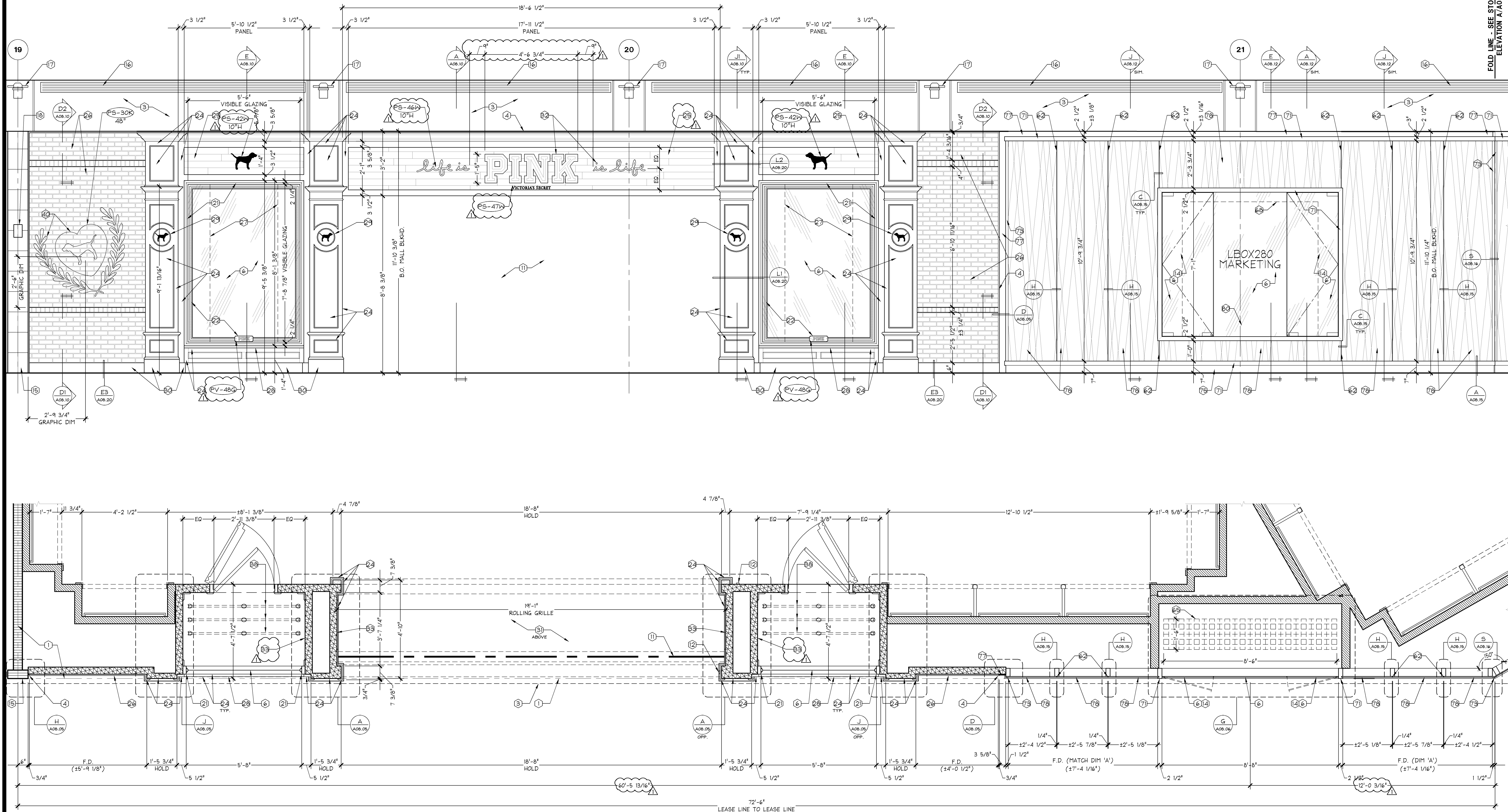
- PRIMED WOOD MULLION, G.C. TO PAINT
- PINK GOLDLEAF VINYL WINDOW GRAPHIC APPLIED TO TENANT SIDE OF GLASS, CENTERED ON WINDOW.
- PAIR OF PRE-FINISHED WOOD DOORS AND PRIMED JAMBS. SEE A/A00.02 FOR SCHEDULE. G.C. TO PAINT JAMBS ONLY. REFER TO STOREFRONT DETAILS.
- HDF PANEL AND WOOD TRIM - G.C. TO PAINT (ALL STOREFRONT MILLWORK, U.O.N.) REFER TO STOREFRONT DETAILS.
- INDIVIDUAL WOOD PLANKS. G.C. TO CUT DOWN PLANKS TO 1/2" - 6" OF LENGTHS. INSTALL W/ RANDOM SEAMS (NO SEAMS W/IN 6" OF ANOTHER). PRIME & PAINT.
- THIN-SET BRICK - SF-32 ON GLEN-GERY THIN TECH PANEL (CLASSIC SERIES OR EQ), PAINT
- OUTLINE OF WINDOW MALL. REFER TO DETAIL N/A00.20.
- BULLNOSE WINDOW SILL TRIM. G.C. TO PAINT
- RADIUS TRIM PACKAGE WITH DOG.
- AZEK BASE. G.C. TO PAINT
- DOT MALLCOVERING [WC-33] SEE ELEVATIONS ON A07.XX AND CEILING PLAN ON A03.XX
- PINK SIGNAGE - HALO ILLUMINATED PINK MOUNTED 'PINK' LETTERS, SIZE AS INDICATED ON ELEVATION
- DOT MALLCOVERING PANEL AT UPPER SECTION G.C. TO PAINT LOWER SECTION
- NOT USED
- DOT MALLCOVERING - INSTALLED IN DISPLAY WINDOW.
- THIN-SET BRICK - SF-32 ON GLEN-GERY THIN TECH PANEL (CLASSIC SERIES OR EQ) - PAINTED BY G.C. - REFER TO PAINT-WHITE DOTS.
- DOT MALLCOVERING - INSTALLED IN DISPLAY WINDOW.
- MARKETING PIPE RAIL, G.C. TO PAINT FULL JOINT
- FIXED PRE-FINISHED ALUMINUM STYLE WINDOW 10' X 3/8"
- NOT USED
- MARKETING PIPE RAIL, G.C. TO PAINT FULL JOINT
- 1/4" EXPOSED BUTT JOINT W/ EXPOSED BLACK CHERRY MULLION BEHIND. ALL EDGES TO BE POLISHED. DO NOT FILL JOINT.
- 1/4" EXPOSED BUTT JOINT. MULLION BEHIND JOINT TO RECEIVE WHITE TAPE BEHIND JOINT TO COVER BLACK CHERRY METAL SURFACE. ALL EDGES TO BE POLISHED. DO NOT FILL JOINT.
- 1/4" EXPOSED BUTT JOINT. W/ NO MULLION BEHIND. ALL EDGES TO BE POLISHED. DO NOT FILL JOINT.

- PRE-FINISHED DECORATIVE METAL PROFILE.
- MARKETING GRID ABOVE SHOWN DASHED. SEE C/A00.16
- NOT USED
- VSS SIGNAGE - 1/4" THICK SURFACE MOUNTED POLISHED ALUMINUM LETTERS ADHERED TO GLASS. SEE AS INDICATED IN ELEV.
- LIGHTBOX TONER FIXTURE.
- PAIR OF SWING DOORS W/ PRE-FINISHED TOP AND BOTTOM RAILS. SEE A/A00.02 FOR SCHEDULE
- PRE-FINISHED SIDELITE BASE AND CHANNEL
- PRE-FINISHED ALUMINUM MULLION W/ CAP
- 3/8" FINISH PANEL
- PRE-FINISHED BREAK METAL. REFER TO DETAILS FOR SHAPES AND SIZES.
- NOT USED
- PRE-FINISHED METAL BASE
- VSS PORTAL SIGNAGE - SURFACE MOUNTED FACE LIT WHITE LED LETTER W/ BLACK CHERRY RETURNS, SIZE AS INDICATED IN ELEV.
- PRE-FINISHED METAL AT NEUTRAL BAND. REFER TO DETAILS FOR SHAPES AND SIZES.
- 1/2" LAMINATED RIBBON GLASS. RIBBON PVB BETWEEN (2) 1/4" GLASS LITES, WITH WHITE OPACICAT BACKING.

- 1/2" TEMPERED GLASS WITH BLACK CHERRY OPACICAT BACKING
- VSS SIGNAGE - 3/8" THICK SURFACE MOUNTED CHROME LAMINATED ACRYLIC LETTERS W/ FLAME POLISHED RETURNS. SIZE AS INDICATED IN ELEVATION.
- 1-3/4" SQUARE X 1-3/4" DEEP FRONT ACCESSIBLE STOREFRONT - WIRELESS FIXTURE. REFER TO ELEC. DWGS. FOR POWER REQUIREMENTS.

STOREFRONT ELEVATION KEYNOTES

05E-A0801-D00-ELEV 04.25.14 D



STOREFRONT ELEVATION

1/2" = 1'-0" A

SHREMSHOCK
Shremshock Architects, Inc.
1420 W. Campus Rd. Suite 150 New Albany, OH 43054
T: 614 545 4550 F: 614 545 4555 | shremshock.com
Timothy J. Shremshock, Architect | 113856

Lbrands
STORE DESIGN & CONSTRUCTION
Three Limited Parkway • Columbus, Ohio 43230
Telephone: 614.415.7000 • Fax: 614.415.7349

THESE DRAWINGS AND SPECIFICATIONS ARE PREPARED FOR USE ON A SPECIFIC SITE. THESE DRAWINGS AND SPECIFICATIONS ARE NOT TO BE USED FOR ANY OTHER PROJECT WITHOUT THE WRITTEN CONSENT OF SHREMSHOCK ARCHITECTS, INC. ANY REUSE OF THESE DRAWINGS OR SPECIFICATIONS WITHOUT THE WRITTEN CONSENT OF SHREMSHOCK ARCHITECTS, INC. IS PROHIBITED. THE USER OF THESE DRAWINGS AND SPECIFICATIONS SHALL BE RESPONSIBLE FOR OBTAINING ALL NECESSARY PERMITS AND APPROVALS FROM THE APPROPRIATE AGENCIES. THE USER OF THESE DRAWINGS AND SPECIFICATIONS SHALL BE RESPONSIBLE FOR OBTAINING ALL NECESSARY PERMITS AND APPROVALS FROM THE APPROPRIATE AGENCIES. THE USER OF THESE DRAWINGS AND SPECIFICATIONS SHALL BE RESPONSIBLE FOR OBTAINING ALL NECESSARY PERMITS AND APPROVALS FROM THE APPROPRIATE AGENCIES.

010500587
VICTORIA'S SECRET
NORTH POINT MALL
SPACE #1050
1000 NORTH POINT CIRCLE
ALPHARETTA, GA 30022

PROJECT INFORMATION:
REQUIRED BY: ELITE CONSTRUCTION GROUP
DATE: 01/02/2015
REVISIONS:
NO ADDENDUM - LANDLORD COMMENTS
A MASTER UPDATES (15150.01 & 0150.04)
DATE ISSUED: 09/19/14
DESIGNED BY: CN
DRAWN BY: CAB
CHECKED BY: JM

SCOPE: STOREFRONT ELEVATION
DESIGN TYPE: LSCAC
PROJECT #: 00059876
A/E PROJECT #:
FULL REMODEL
N/A
GENERATION: SPRING 2015 (142Fo)
PKG II
140332

DRAWING NUMBER:
A08.01